

Corners to be Indexed

E1/4 13-106-41

W1/4 13-106-41 (E1/4 1-106-41)

NOV 15 2024

*Karen Brown*

I hereby certify that this document and the data contained herein was prepared by me or under my direct supervision

*Daniel L. Bueltel*

10/28/2024

Daniel L. Bueltel

Date

License No. 43844

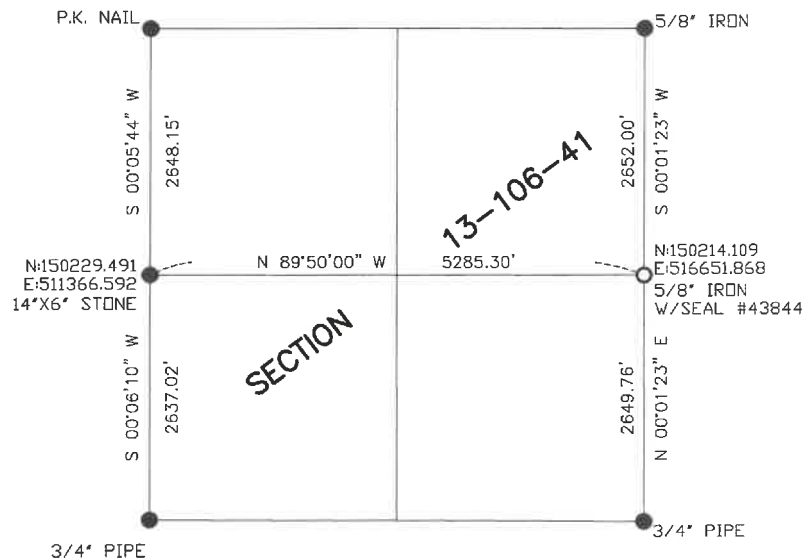
## CERTIFICATE OF LOCATION OF GOVERNMENT CORNER

Land survey monuments situated in Section 13, Township 106, Range 41, 5TH P.M.

STATE OF MINNESOTA, County of MURRAY



- FOUND MONUMENT
- SET MONUMENT



Murray County Coordinate System (1996 Adj.)

### Statement of Evidence

E1/4 13-106-41

In July of 1861 J.W. Myers surveyed the original township lines.

In July and August of 1861 LG.M. Fletcher subdivided the township.

A survey by J.W. Woolstencroft dated October 2, 1924 gives a distance of 2652 feet from the Northeast corner of Section 13 to the East Quarter corner Section 13.

On May 8, 2023 Bueltel-Moseng Land Surveying searched the area for the corner and found nothing. Set a  $\frac{5}{8}$ " iron with seal #43844 on line between the section corners and at a distance of 2652.00 feet from the Northeast corner of the Section. Corner fell in the intersection of well established fence lines running north/south and east/west.

W1/4 13-106-41 <sup>E</sup>~~W~~1/4 14-106-41)

In July of 1861 J.W. Myers surveyed the original township lines.

In July and August of 1861 LG.M. Fletcher subdivided the township.

A survey by Perry Zieske, LS 23008, dated November 16, 2012 shows an 14"x6" stone monument at the corner.

On May 8, 2023 Bueltel-Moseng Land Surveying dug by hand and found a 14"x6" stone at the location of the corner. The position fits what Perry Zieske had in 2012. Accepted the stone as the monument.